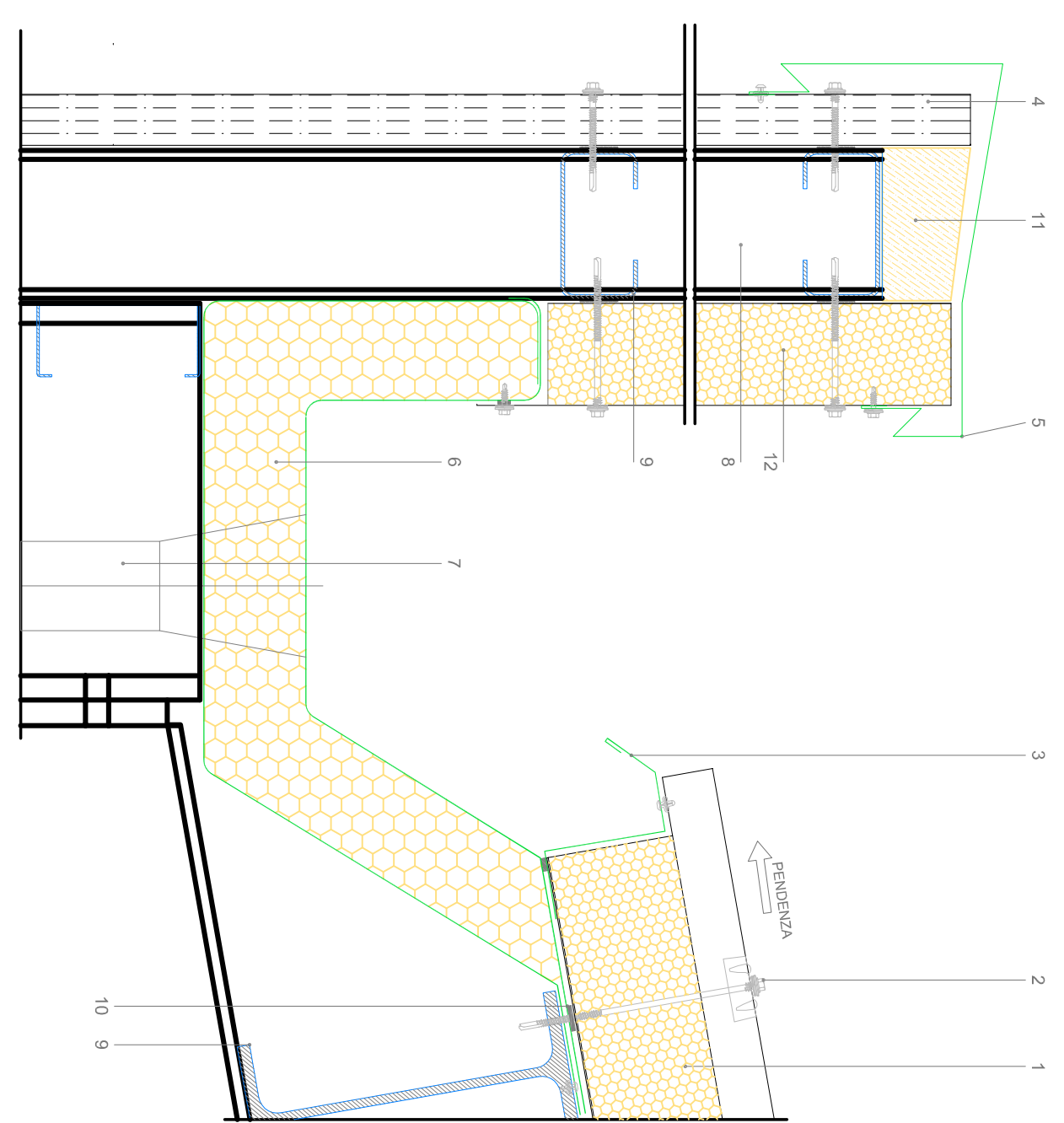
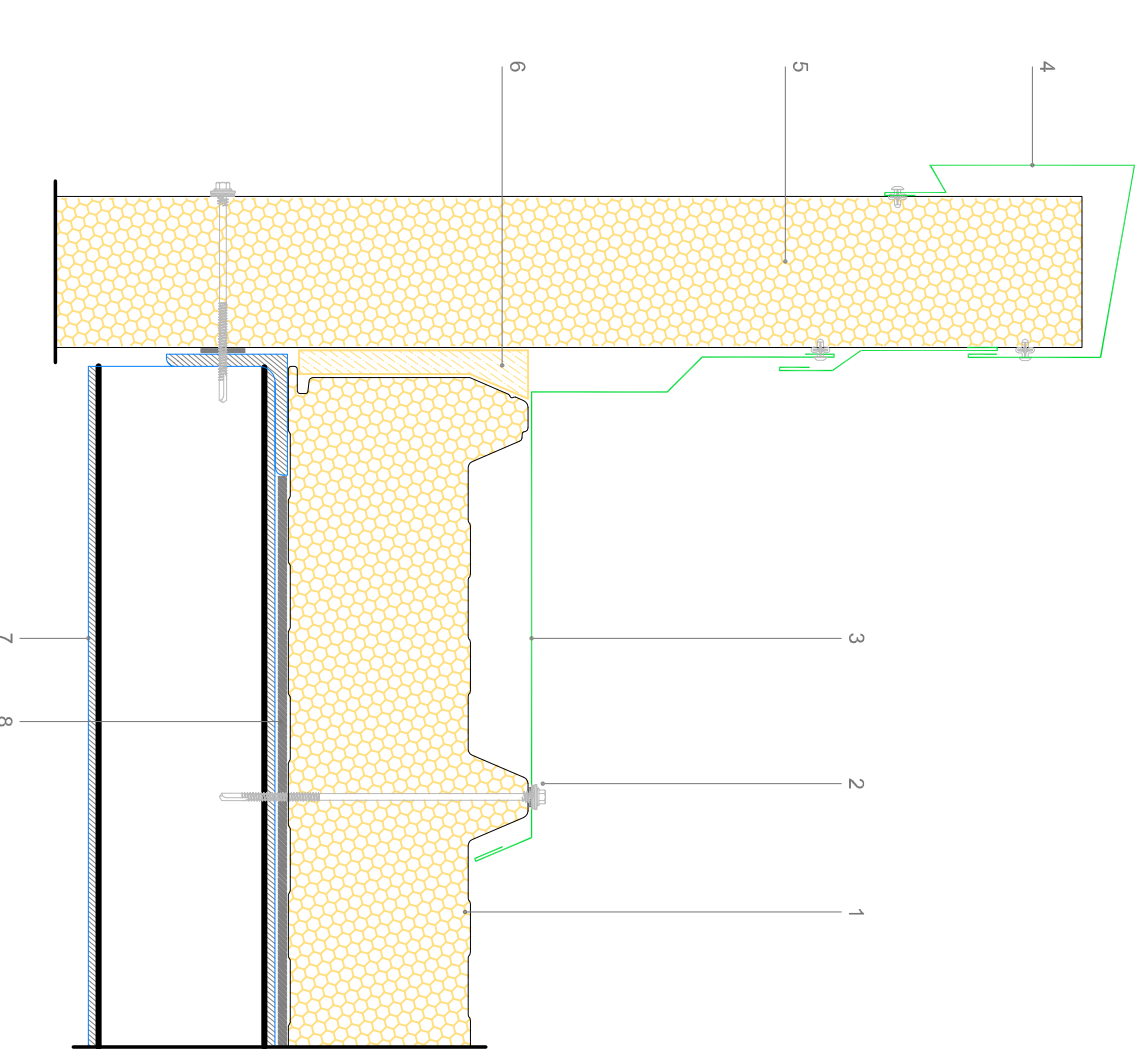


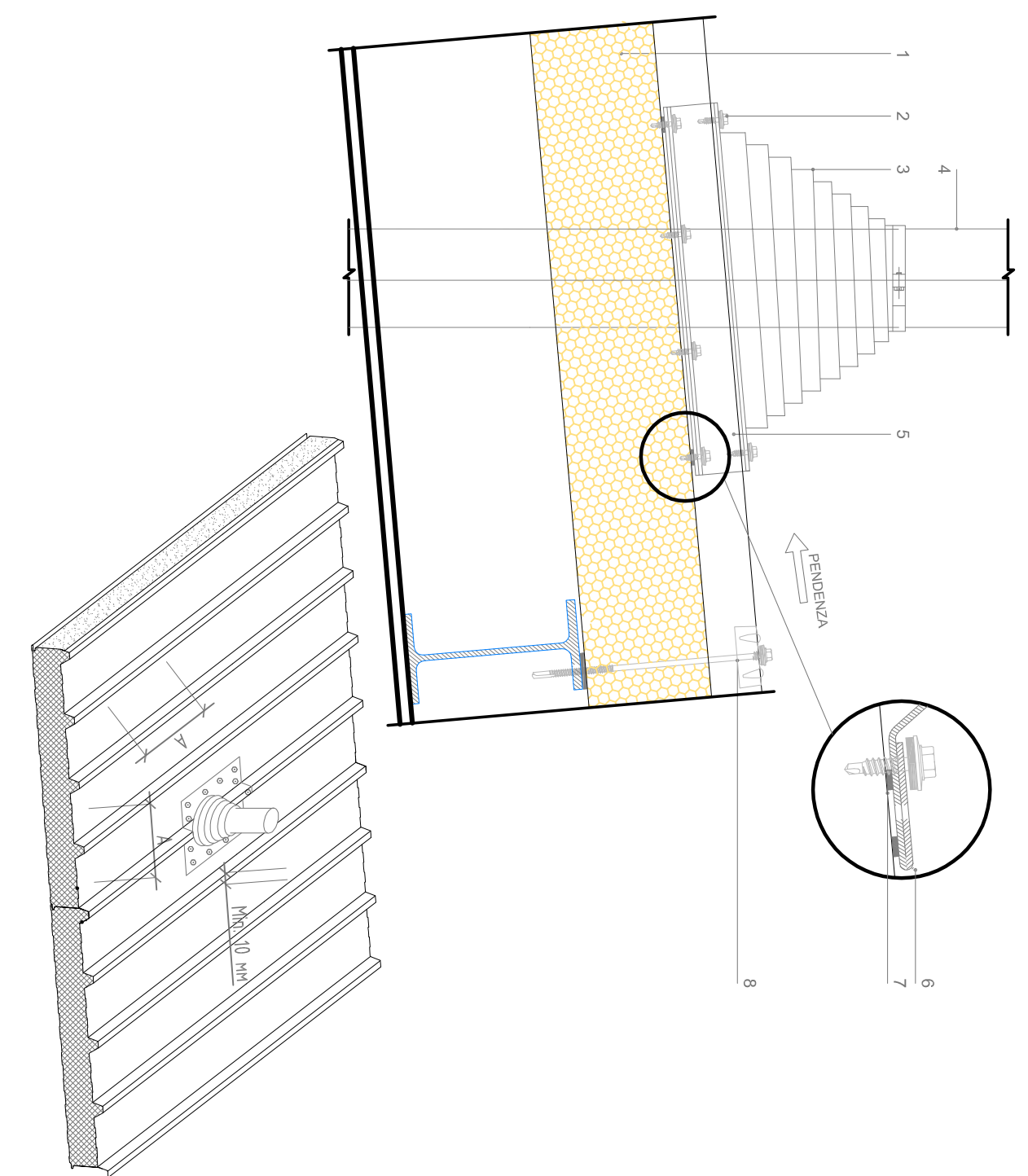
PARTICOLARE P1



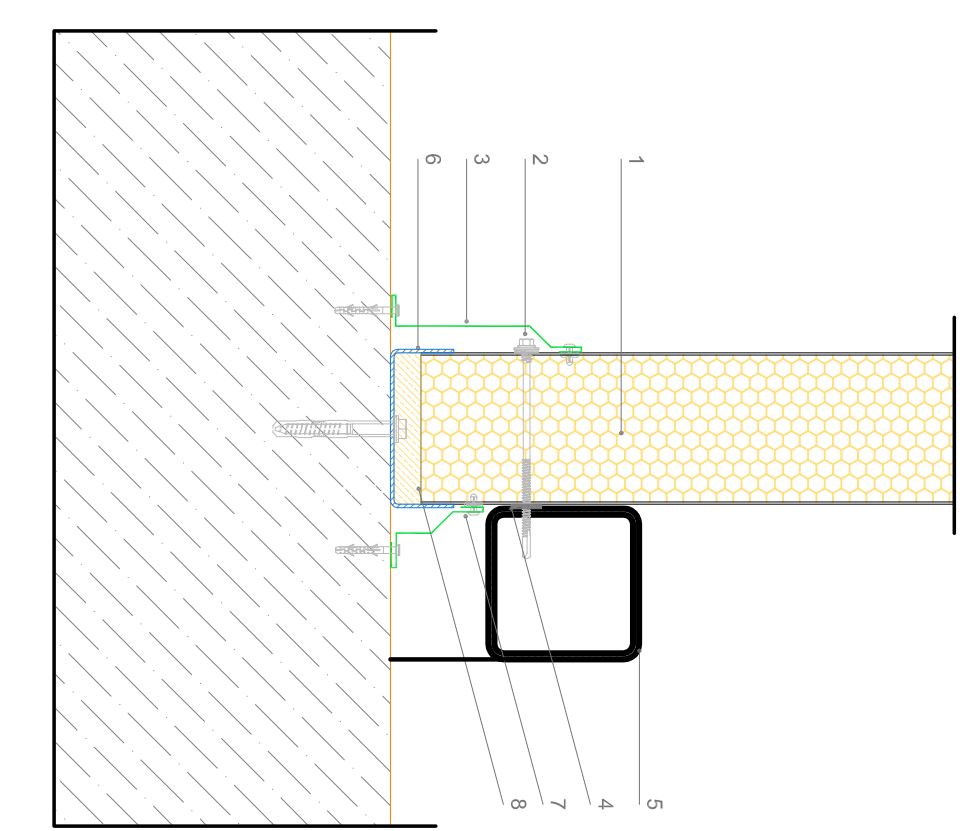
PARTICOLARE P2



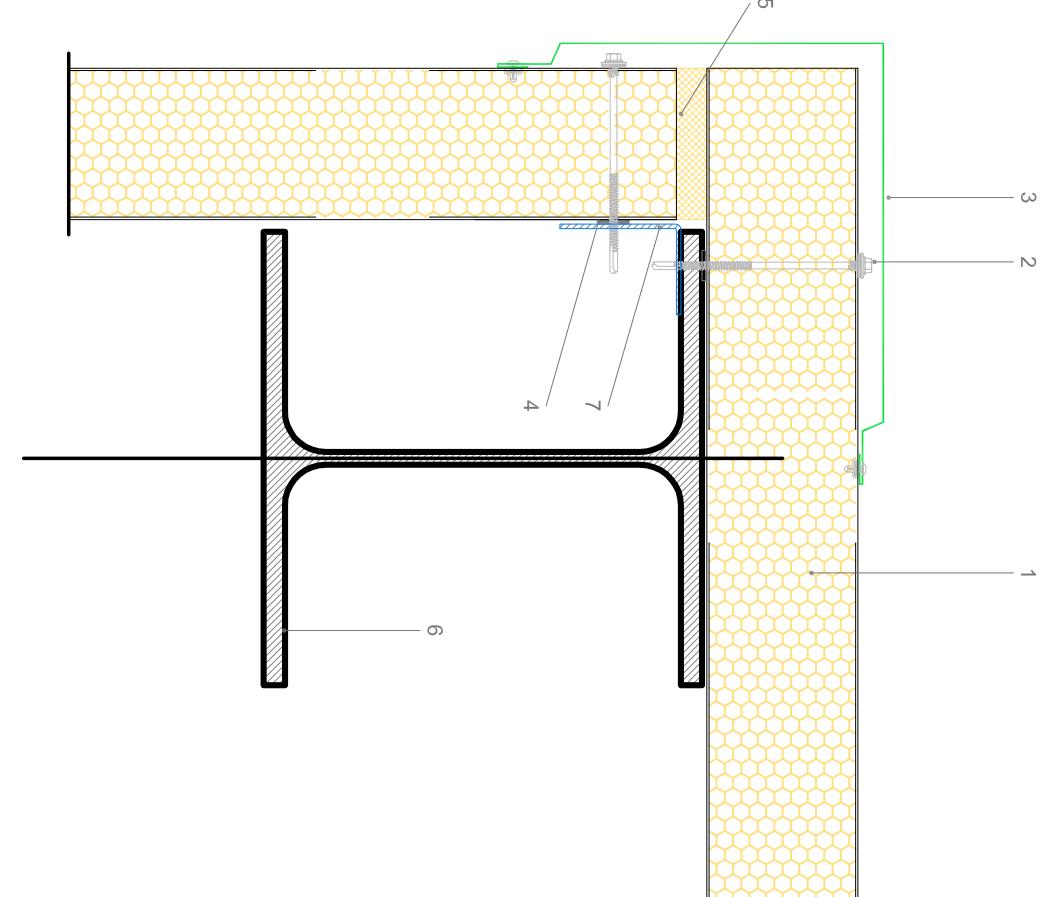
PARTICOLARE P3



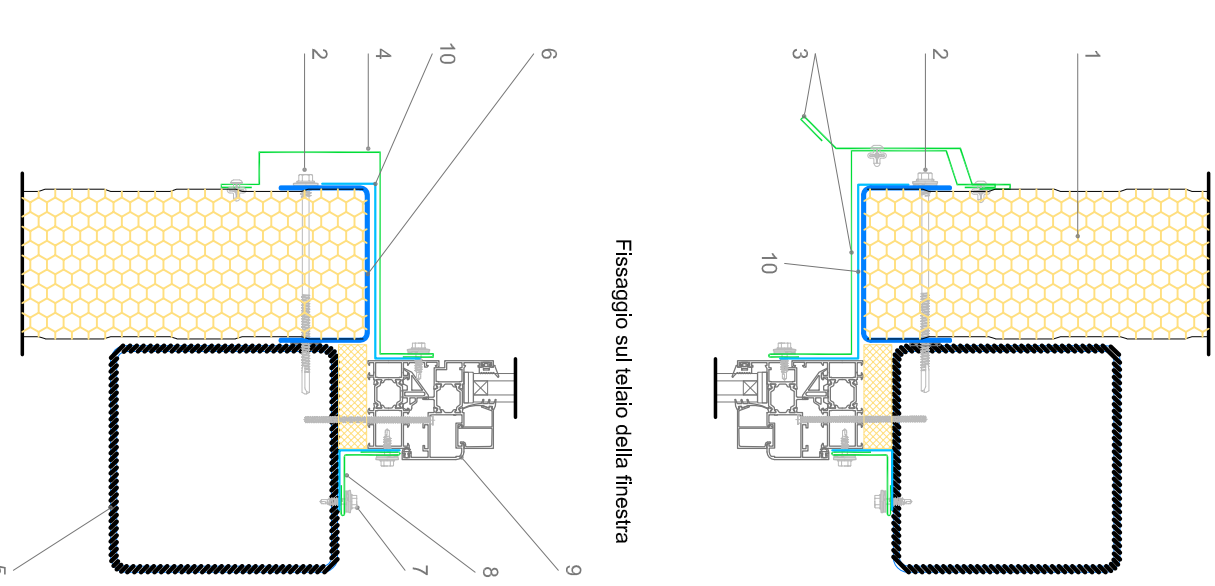
PARTICOLARE P4



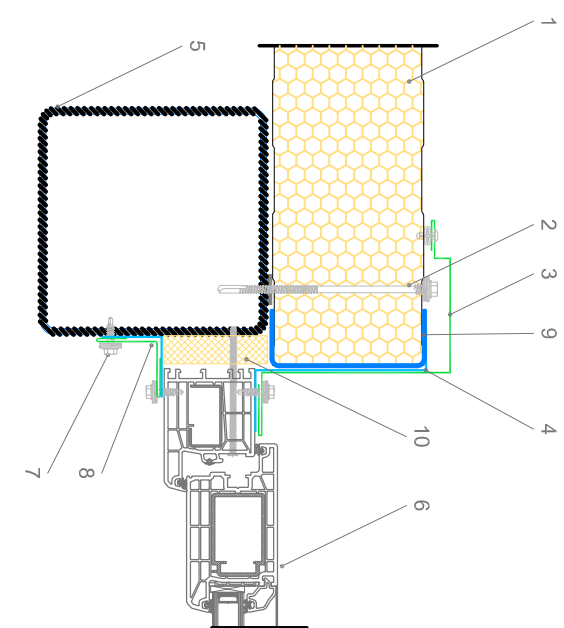
PARTICOLARE P5



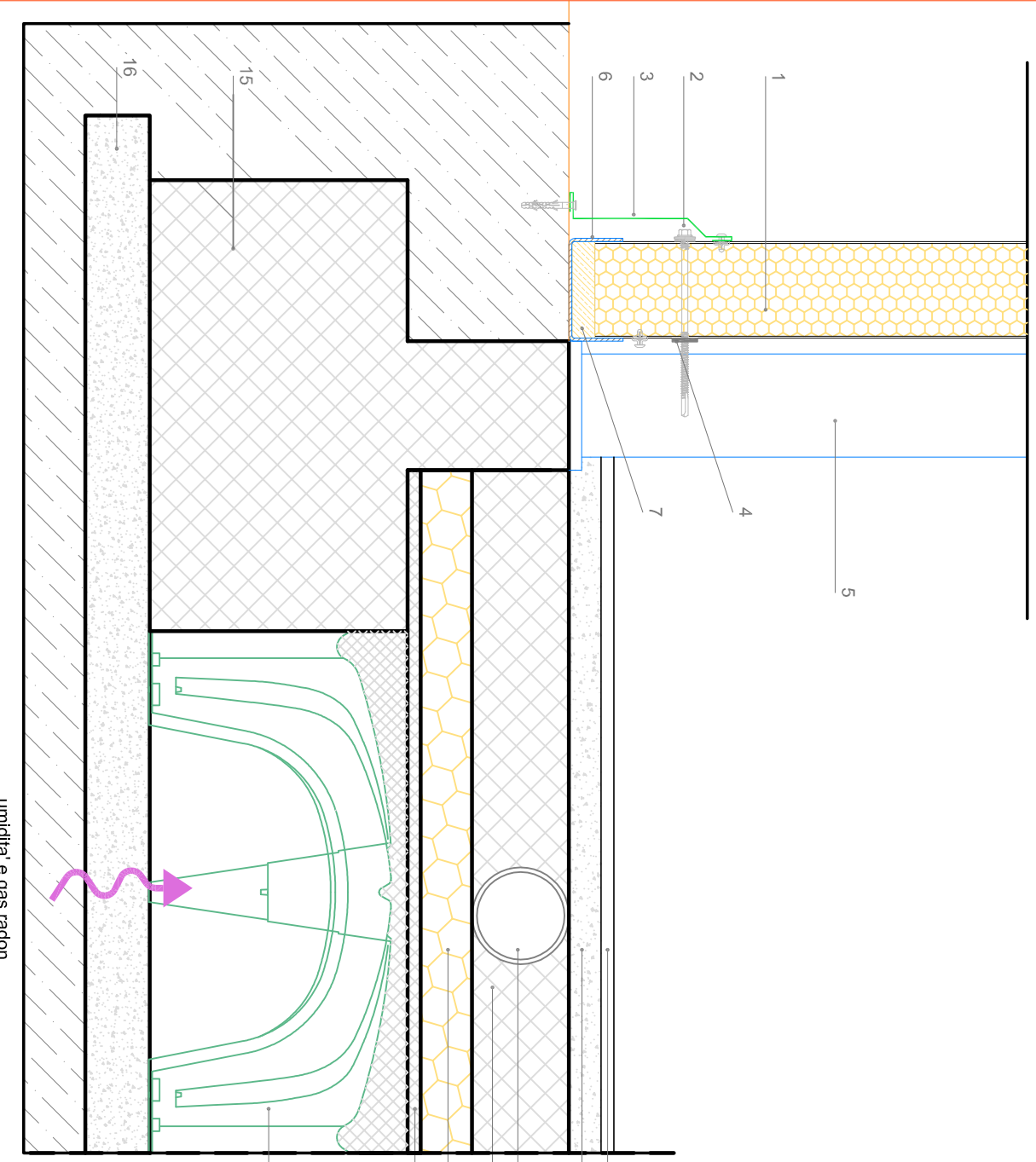
PARTICOLARE P6



PARTICOLARE P7



PARTICOLARE P8

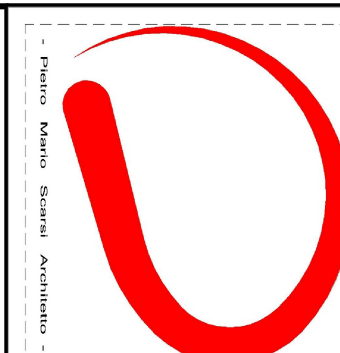


PARTICOLARE P9

COSTRUZIONE NUOVO CENTRO POLIFUNZIONALE DI  
PROTEZIONE CIVILE

- PARTICOLARI COSTRUTTIVI -

Comune di: ENDINE GAIANO  
Provincia di Bergamo  
Localita' : Via Valle delle Fontane  
Mappale N. 2717



Progettista:  
SCARSI Arch. Pietro Mario  
Collaboratrice:

SCARSI P.M. ARCHITETTO

20090 ENDINE GAIANO (BG) - Tel. 035/271700 - Mobile N. 035/271700

Il proprietario:  
Amministrazione Comunale  
Endine Gaiano

Data  
21/08/2023  
Scala  
1:50